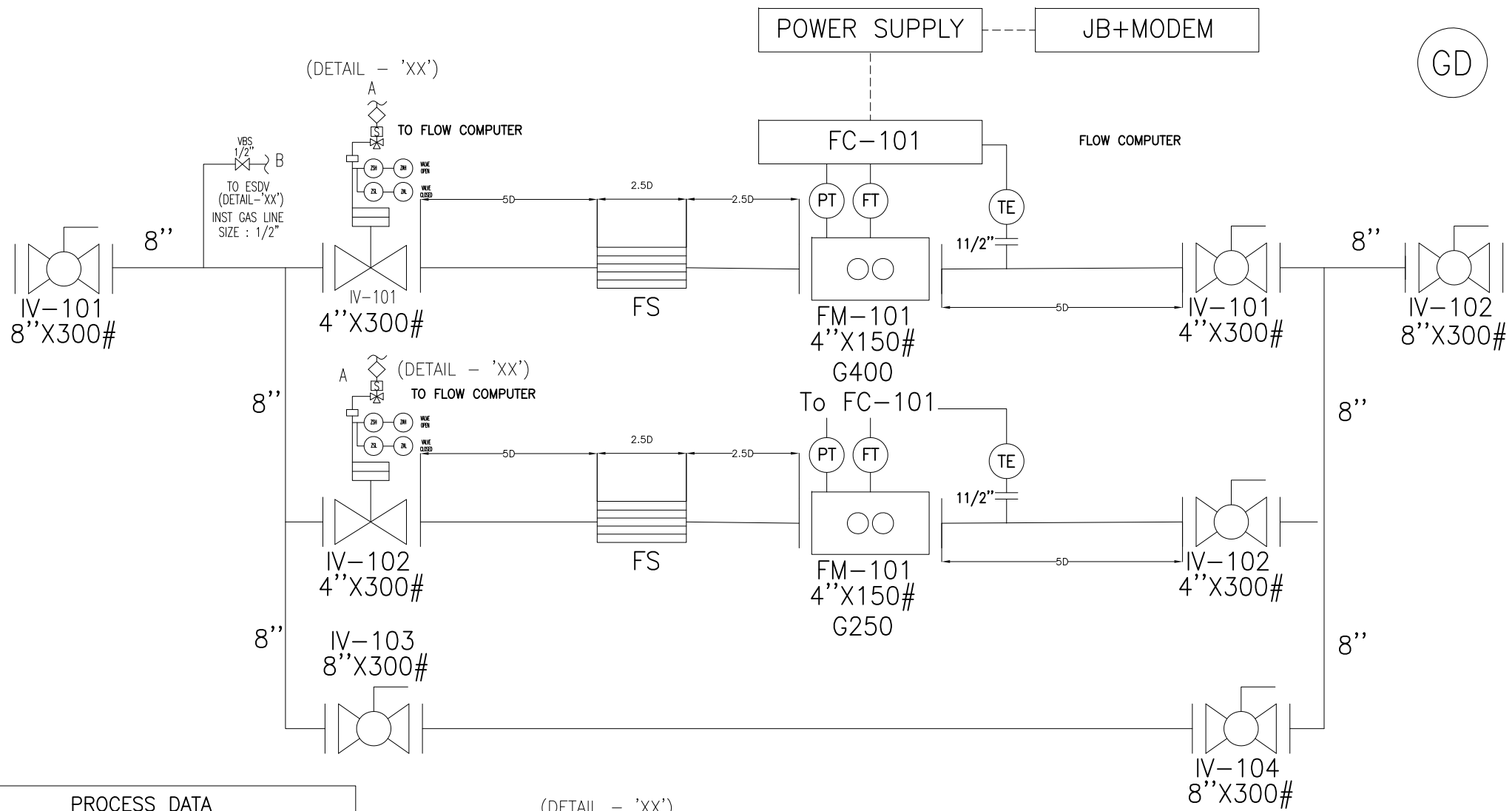


TO FLOW COMPUTER



PROCESS DATA

SERVICE	NATURAL GAS
INLET PRESSURE	25 BARG
OUTLET PRESSURE	25 BARG
FLOW RATE	200000 SCMD FOR ST-1 100000 SCMD FOR ST-2
INLET SIZE	8"X300#
OUTLET SIZE	8"X300#

(DETAIL - 'XX')

